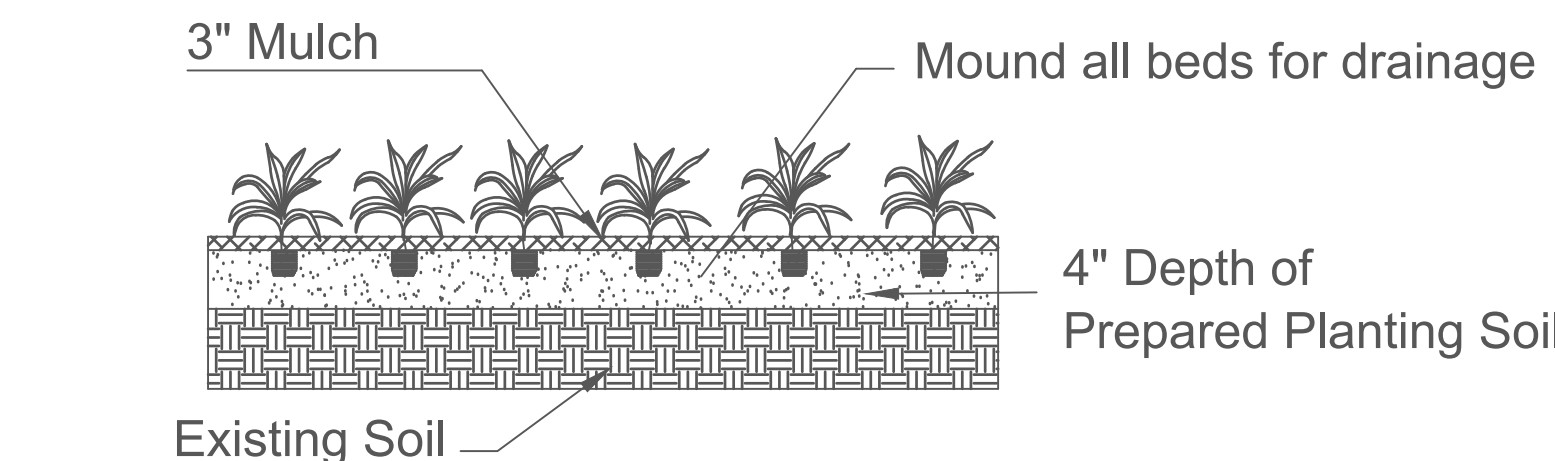


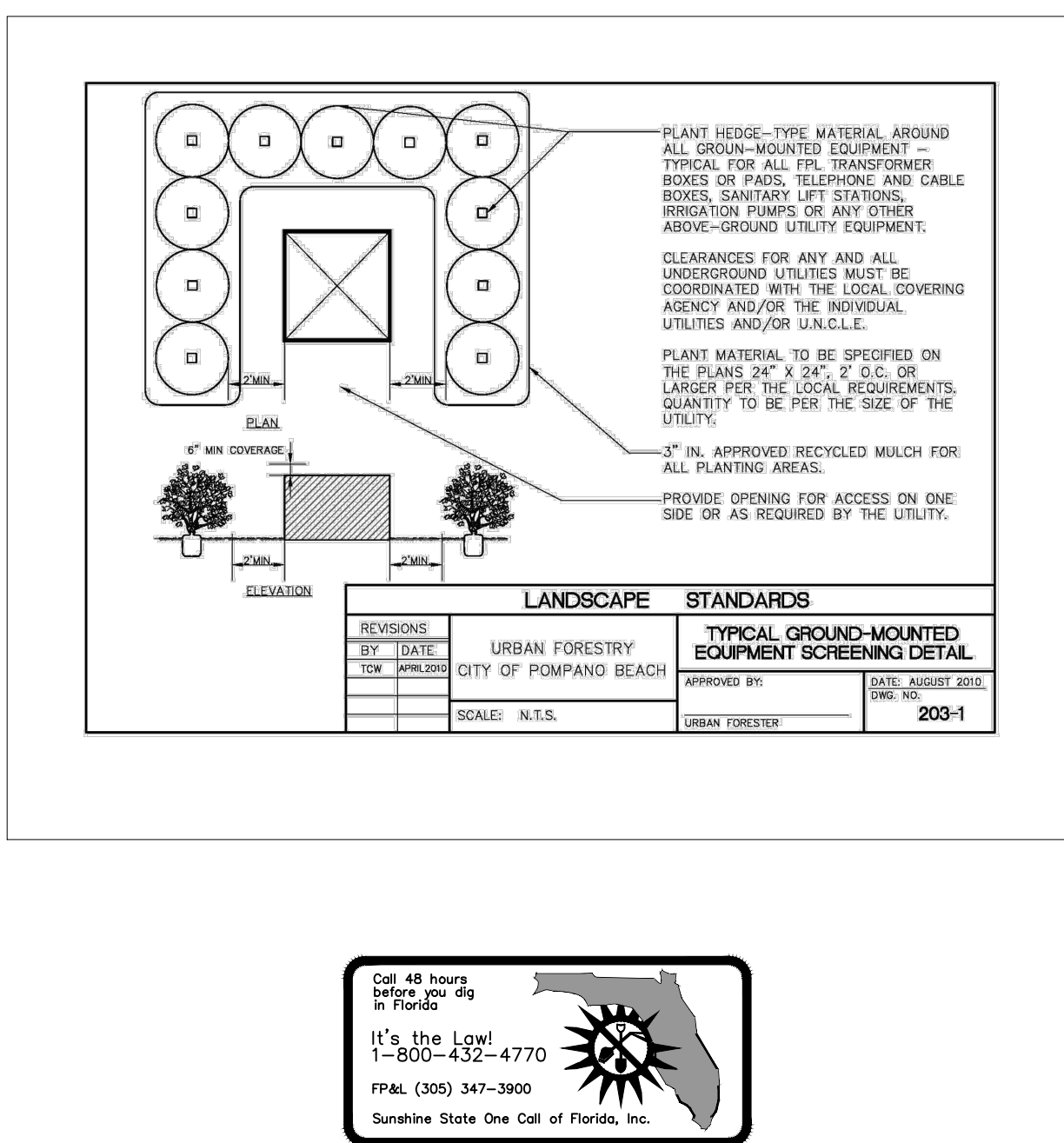
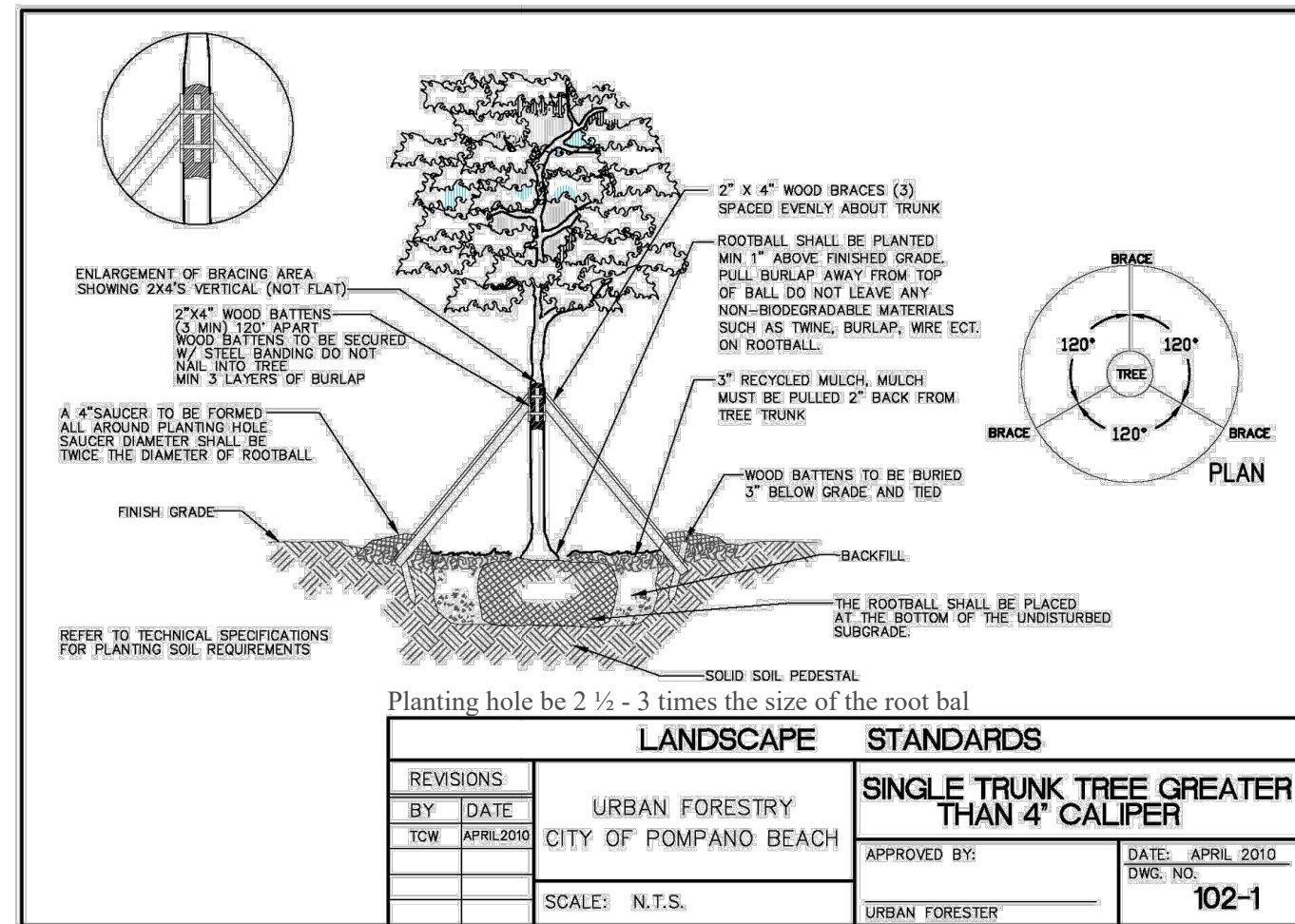
Tree Stakes are to be removed between 6-12 months by the Owner.



Edge of Pavement, Curb or Bedline



Tree Stakes are to be removed between 6-12 months by the Owner



NTS

## Standard Landscape Plan Notes

1. A pre-construction meeting with the Pompano Beach City Arborist is required prior to landscaping activities including removal of trees and/or installation of plant material. Call 954.545.7766 a minimum of 5 days prior to desired start date to schedule pre-construction meeting.
2. All existing trees proposed to remain are to be separated from the limits of disturbance of the construction area by tree protection fencing and signage. The tree protection fencing shall be located at the edge of the tree protection zone as depicted on the plan or at the edge of the drip-line(s) if a tree protection zone is not designated. No material storage or construction access is permitted within the tree protection zone.
3. All existing trees shall be pruned to ANSI A-300 standards to correct potential hazards.
4. A tree removal permit is required prior to removal or relocation of any tree or palm. Contact the Pompano Beach City Arborist at 954.545.7766 to obtain permit information.
5. Landscape contractor shall notify Sunshine One Call of Florida, Inc. at 1-800-432-4770 a minimum of 2 full business days prior to digging. Landscape contractor is responsible for avoiding damage to utilities from plant installation.
6. Tree relocations:
  - a. Existing trees to be relocated shall be root pruned a minimum of 120 days prior to relocation
7. Minimum root ball sizes shall be in accordance with ANSI standards as follows:  
Caliper Minimum Root Ball Diameter
  - 1 16
  - 2 24
  - 3 32
  - 4 42
  - 5 54
  - 6 60
  - 7 70
  - 8 80
8. All new landscape areas shall be excavated down to a depth of 24 inches below final grade and back filled with clean debris-free soil. Construction access shall be restricted from the landscape area after excavation and backfill is complete.
9. All landscape areas shall be finish graded such that they are a minimum of 3.5 inches below surrounding paved surfaces so as not to impede the flow of drainage into landscaped areas and to allow for a 3-inch mulch layer.
10. All overhead utilities will be buried for this project as per 155.5509.
11. All hedges abutting City Rights of way are maintained at a height no greater than 24".
12. For example; Penalties would be incurred by the contractor for damages to the existing trees on site from the contractor, the subcontractors, or employees. Any encroachment within the tree protection zone, failure to maintain the tree protection zone, or any damage to the tree(s) or critical root zones will result in mitigation. The cause of damages would include, but not be limited to, storage of materials, placing fill or debris, disposal of paint or solvents, parking of machines under trees or tree protection zone encroachment. An example of this would be; Violations of this will result in a fine of \$1000.00 for the first offense, \$1500.00 for the second, and \$2000.00 for the third, etc. If physical damage is done to the tree, an appraisal of the damages and related fees will be determined by an ASCA Registered Consulting Arborist, and be based on all, or a percentage of, the established value assigned to the tree.
13. Tree relocation.

△	REVISION / DATE

# EnviroScape

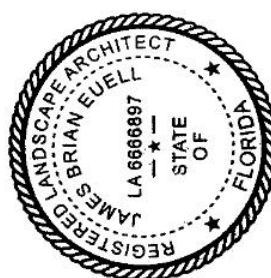
4132 SW 51 ST  
Dania Beach FL 33314

## Multi Family Residence

1602 North Riverside Drive  
Pompano Beach FL

DRAWN BY:	
CHECKED BY:	
JOB NUMBER:	1602 S
DATE:	12/1/2024

N



SEAL

L-2

PZ25-12000003

03.19.2025